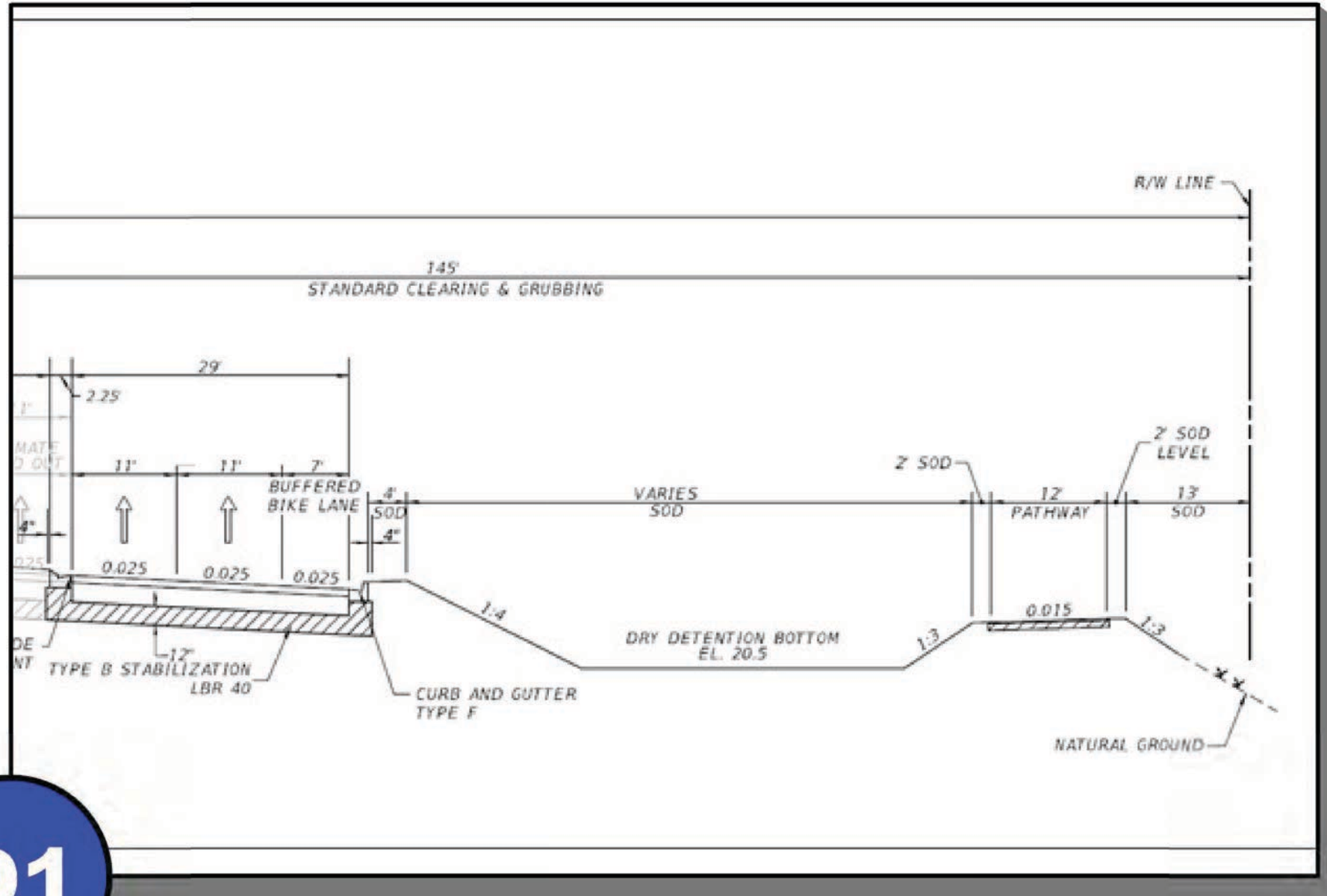


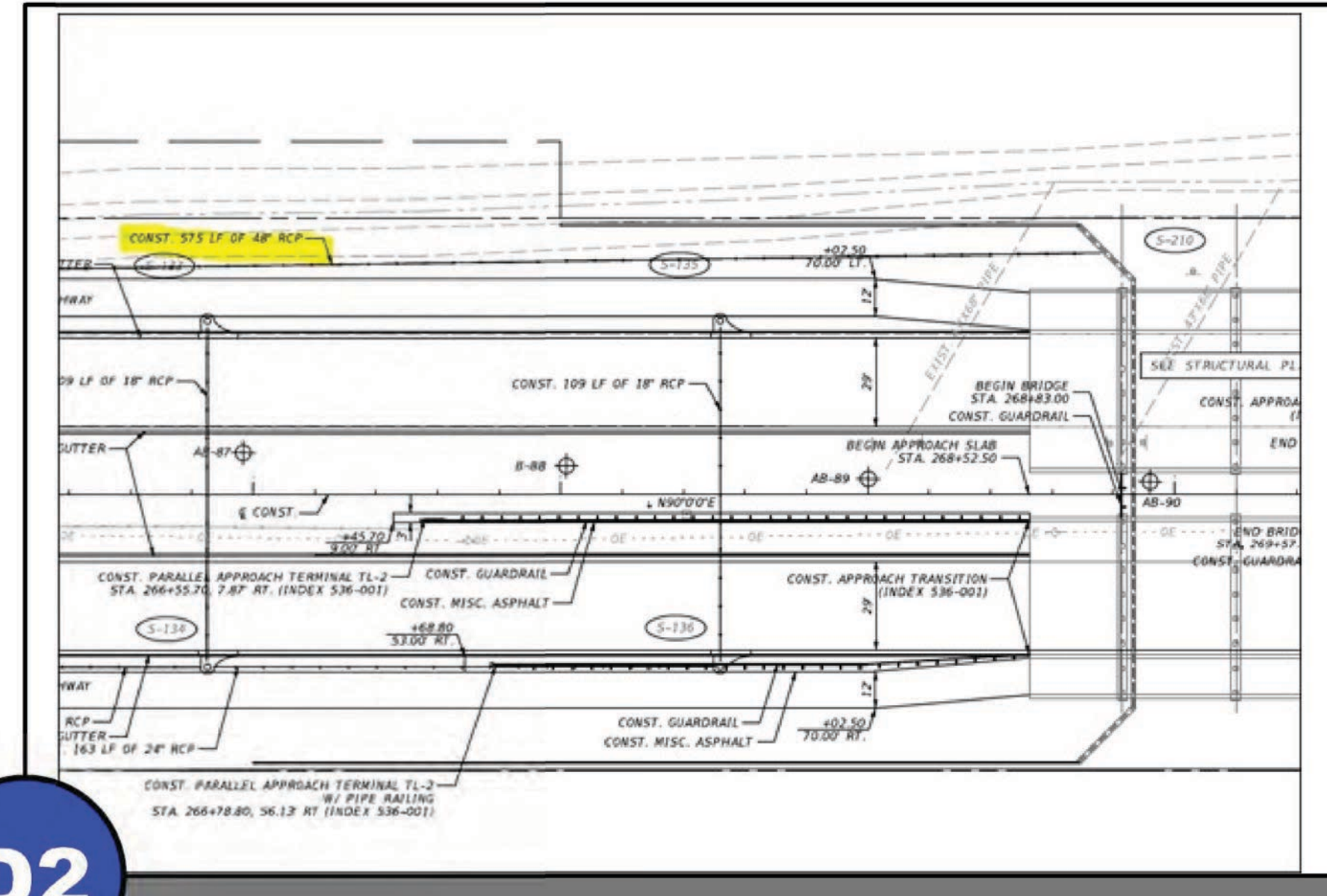
DRAINAGE INITIATIVES



D1

Dry Treatment Ph1

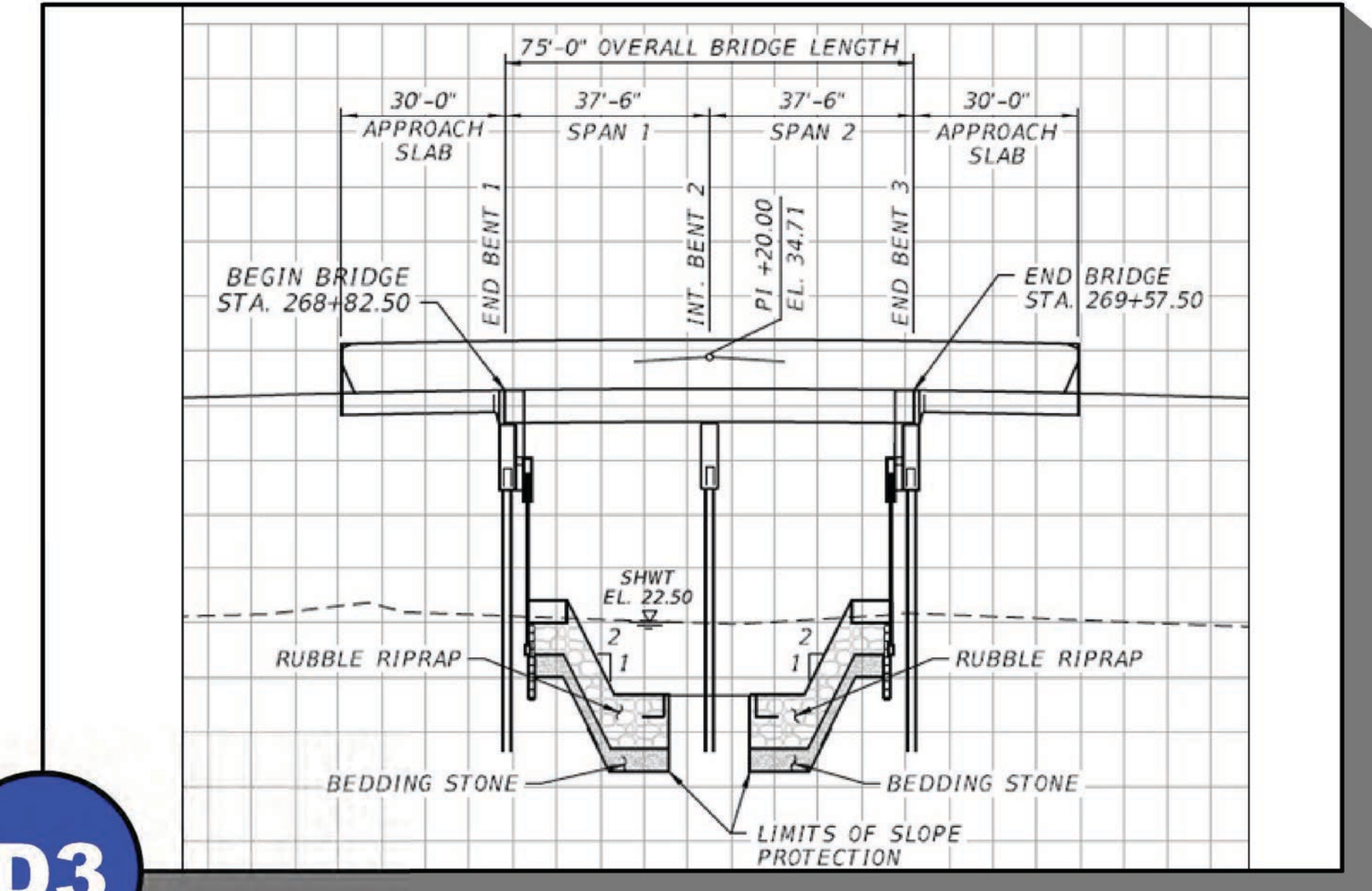
Phase 1 improvements will include a dry retention area within the County ROW to provide water quality treatment prior to discharging to the county-owned pond west of WildBlue.



D2

Western Slough Emergency Overflow

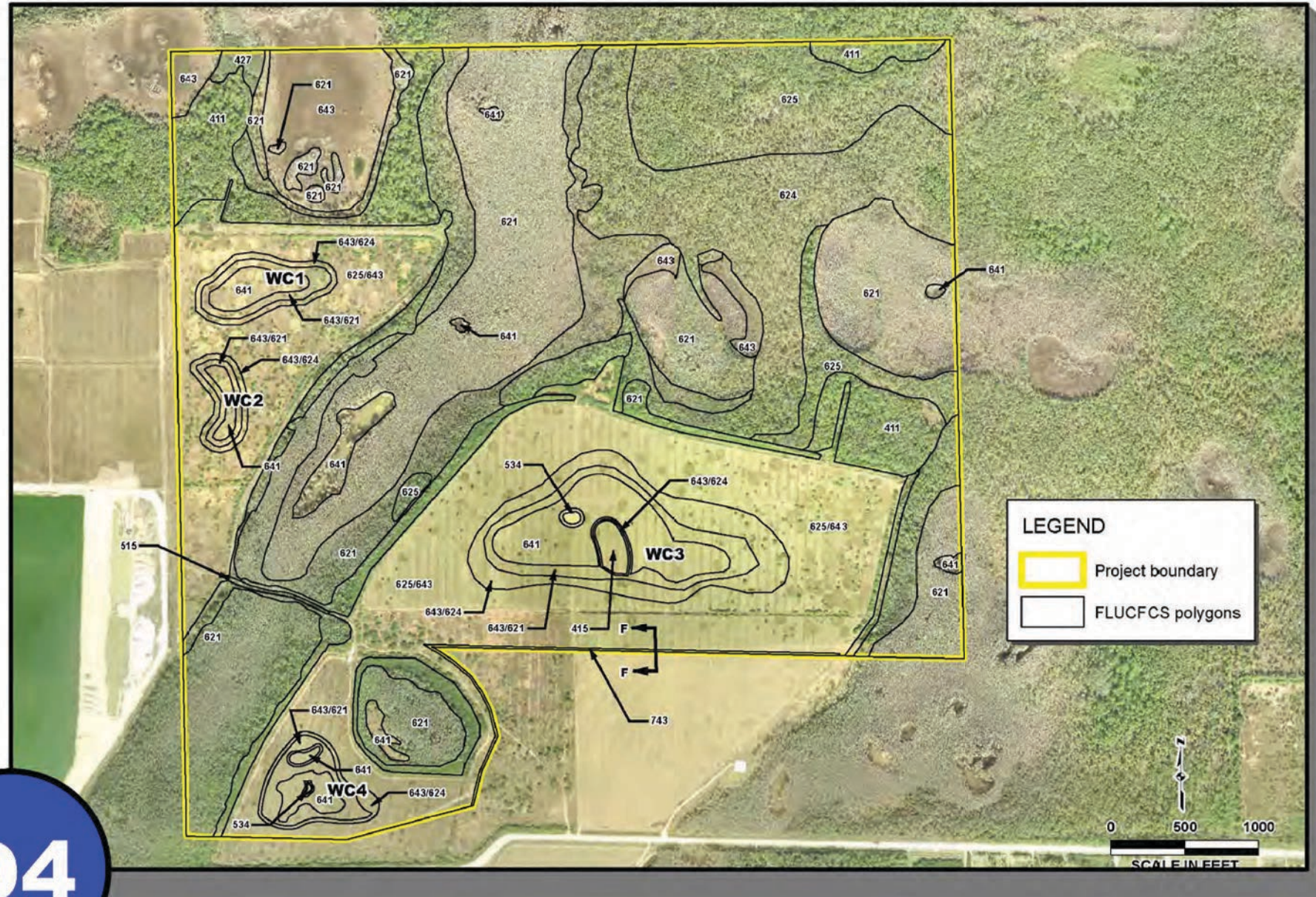
Phase 1 improvements will also include a weir-controlled pipe outfall to serve as an emergency overflow into the large County pond west of WildBlue. Should the western slough exceed predetermined flood stages, additional volume can be transferred and stored in the County pond.



D3

Primary Dual-Span Bridge Drainage Conveyance

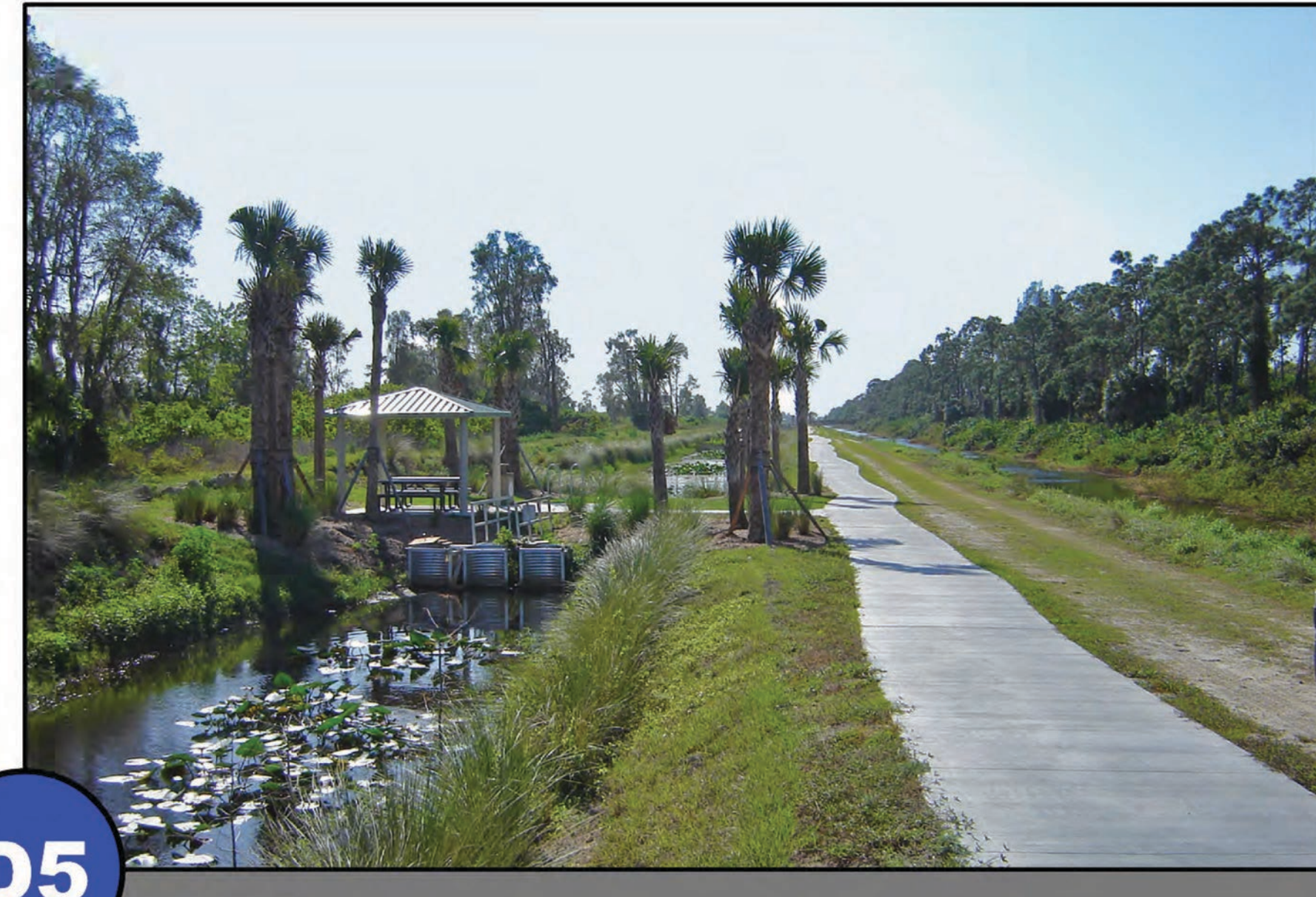
The dual-span bridge at the western slough will provide a large drainage channel to return flows to more historic levels, with the flow being controlled by the natural slough width and depth constraints.



D4

Wild Turkey Strand Site 90

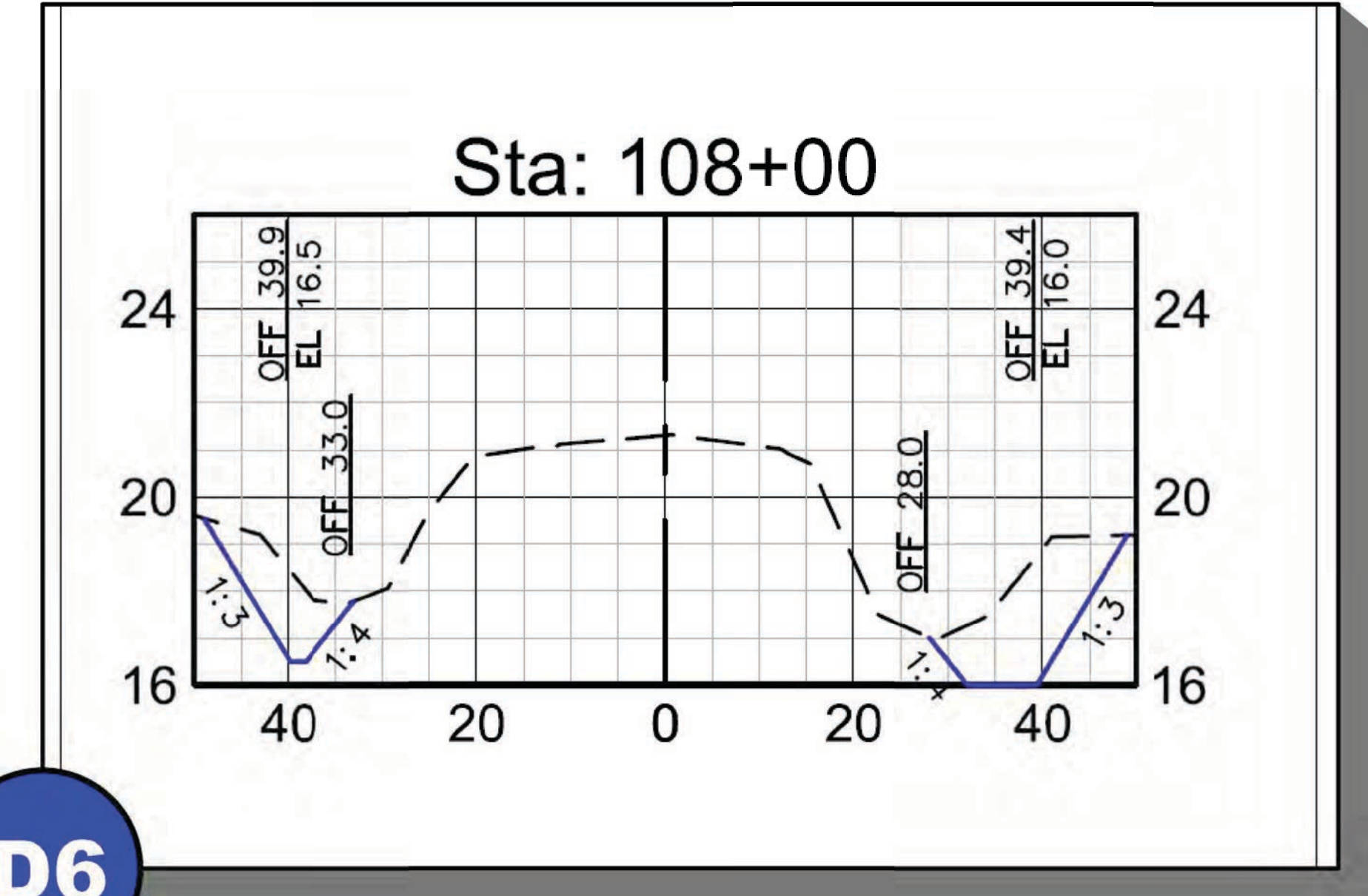
Hydrologic Improvements As part of the overall environmental restoration the old farm field ditches and berms are being removed and the ground returned to historic elevations. Additional wetland areas are also being created within the farm field area. This restores the natural sheetflow conditions of the land while also providing additional stormwater storage during large rainfall events.



D5

East-West Slough Emergency Interconnect

A filter marsh area on the north side of the intersection will provide water quality treatment in regular events. This same filter marsh area will also have operable weir structures designed and intended to allow cross flow between the eastern and western slough. This will allow one slough to "overflow" into the other if necessary, in large events. Before large rainfall events gates may also be opened to provide additional storage capacity within the slough to reduce the ultimate peak discharges.



D6

Alico North-South Conveyance Capacity Improvements

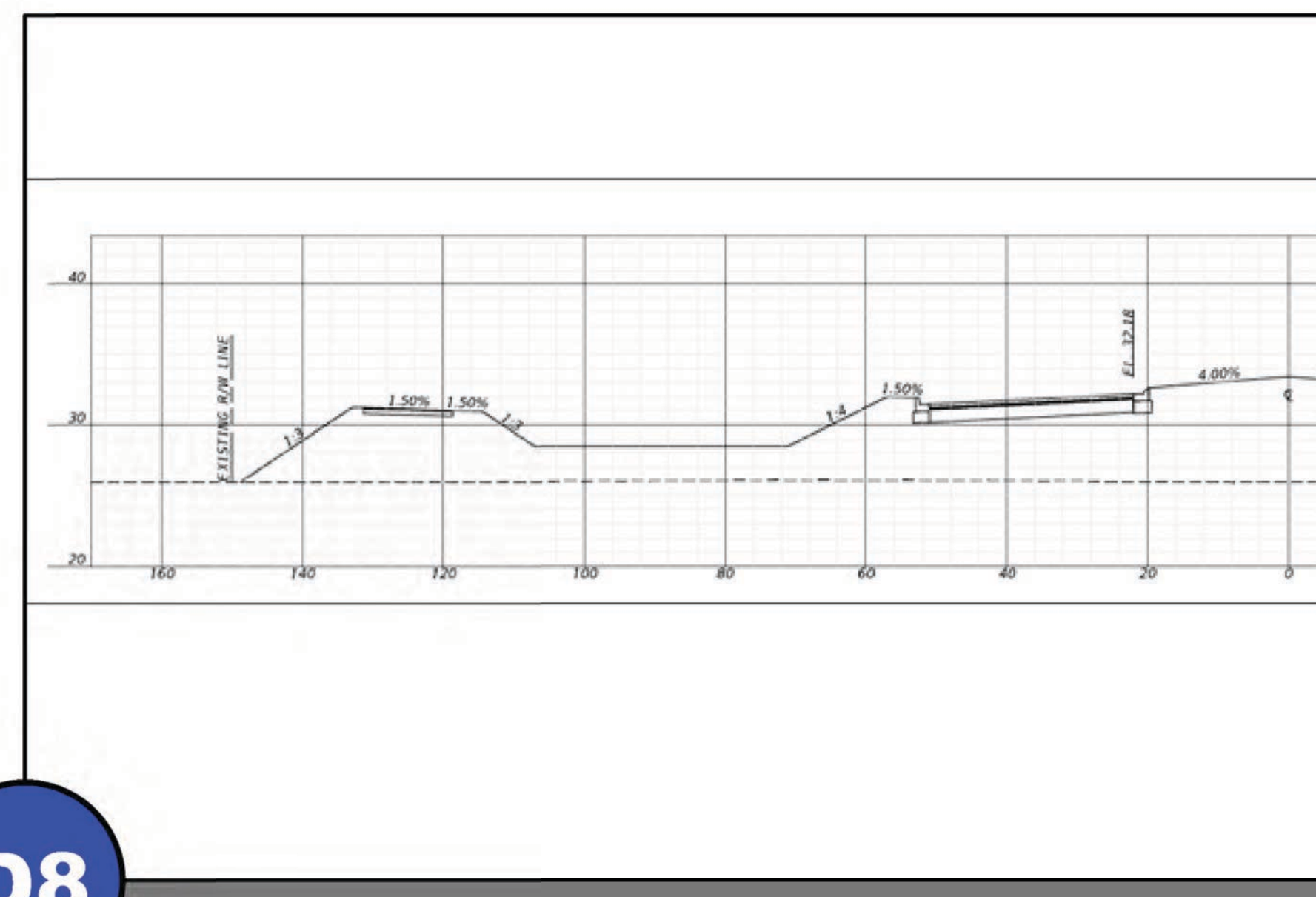
Lee County is currently designing and permitting proposed ditch improvements to the North-South portion of Alico to allow for increased outfall capacity for the eastern slough in large rainfall events. These improvements are intended to be constructed in conjunction with the Phase 1 roadway improvements.



D7

Treatment Ponds

Several pond sites have already been acquired from the Vulcan mine property. These ponds will provide water quality and attenuation treatment from the roadway runoff before it is discharged into the surrounding wetland areas.



D8

Dry Treatment Ph3

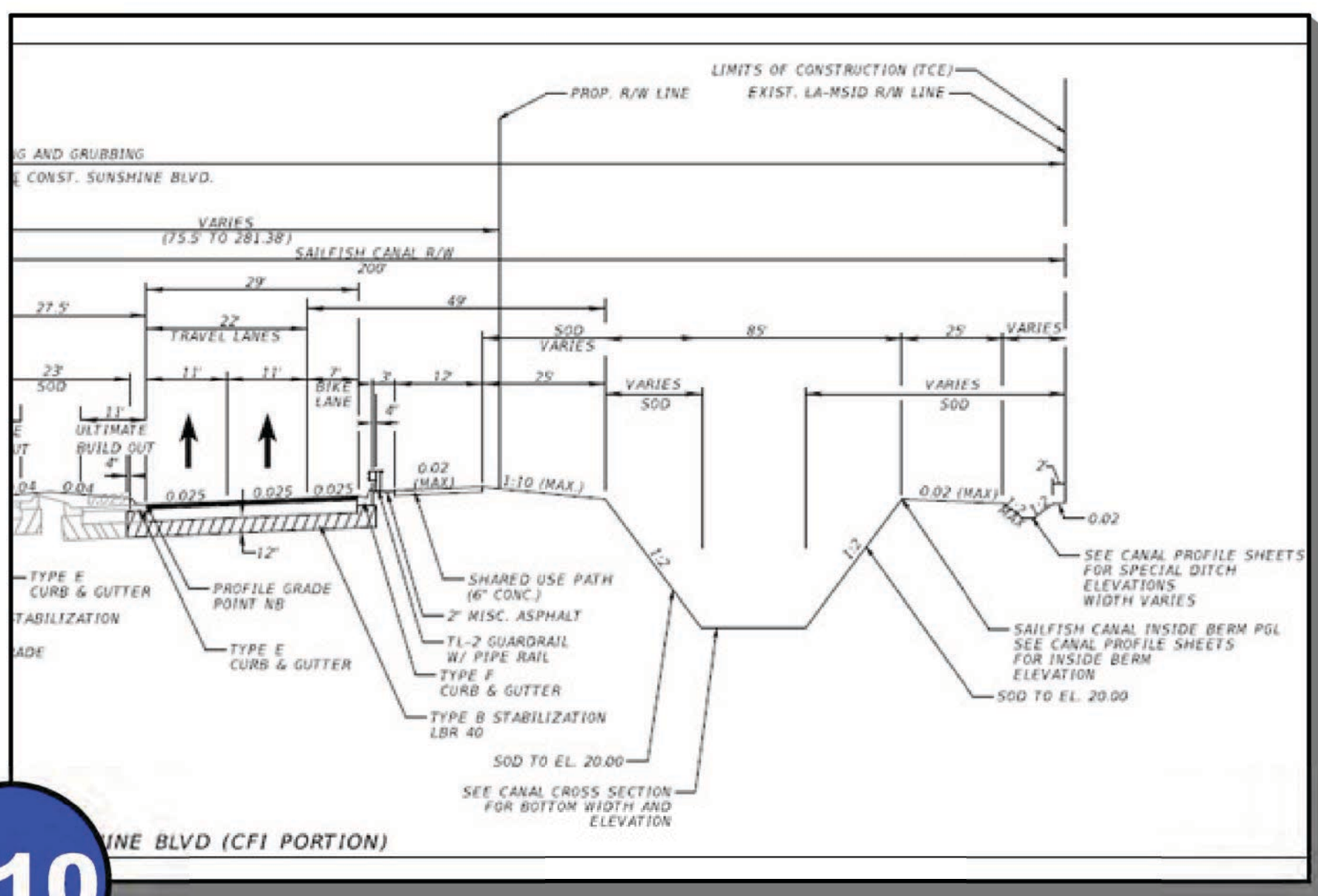
Linear dry detention is being proposed for the entire length of roadway adjacent to the Jamerson Farms property. This will provide water quality treatment and quantity attenuation before it is ultimately discharged to the west.



D9

Green Meadow Road North Conveyance Improvements

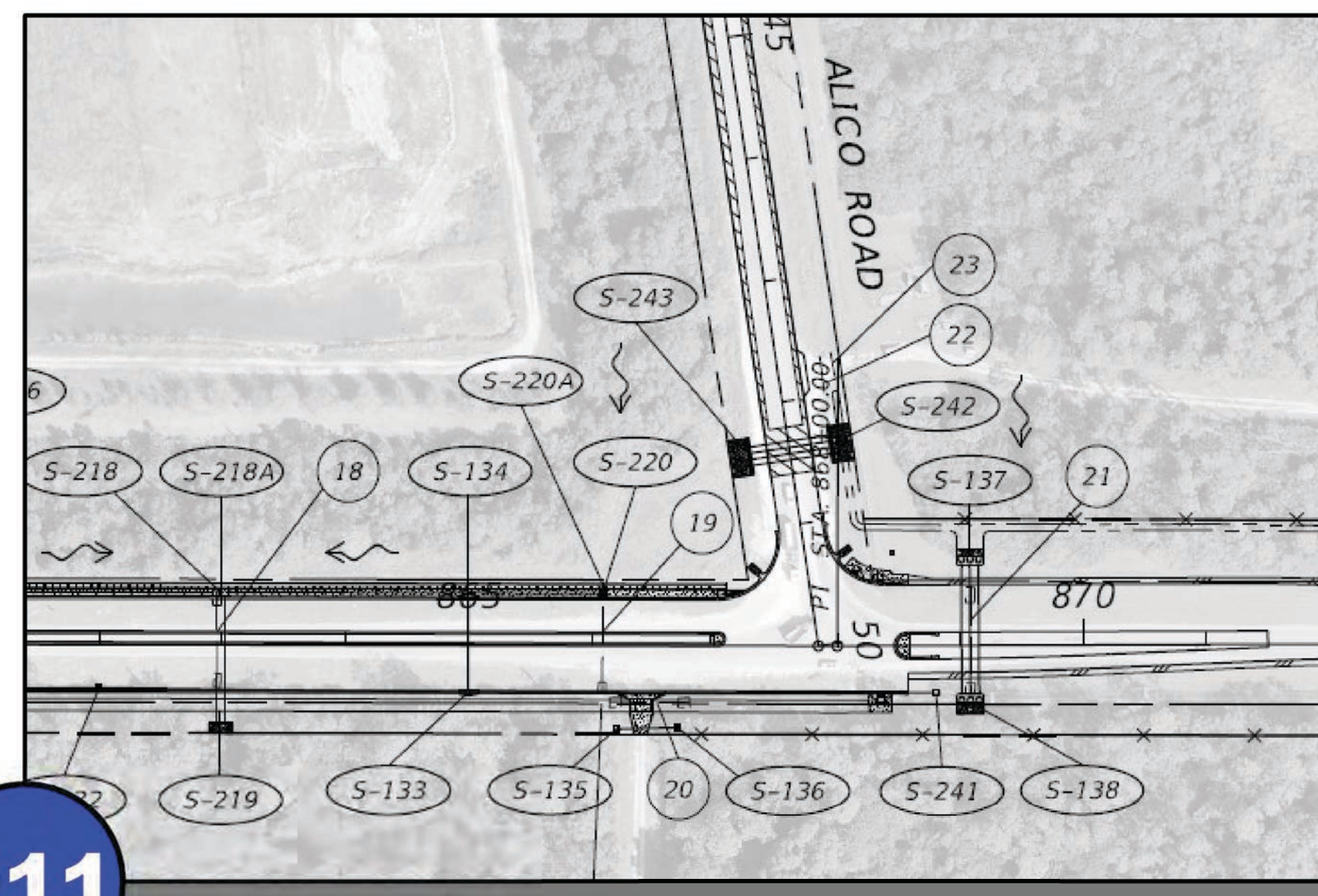
With the Alico Connector and SR82 intersection improvements the connection point of Green Meadow Road will need to be moved. In conjunction with this relocation, culverts will be constructed under the new roadway to allow stormwater runoff to sheetflow west where it has historically drained.



D10

Sunshine Blvd Treatment and LA-MSID System Improvements

Lee County is coordinating with Lehigh Acres Municipal Services Improvement District to provide improvements within the Sailfish canal along Sunshine Blvd. By enlarging the existing canal, the roadway runoff will receive water quality treatment and will also providing the necessary stormwater runoff attenuation in large events.



D11

Corkscrew Ph2 Drainage Improvements

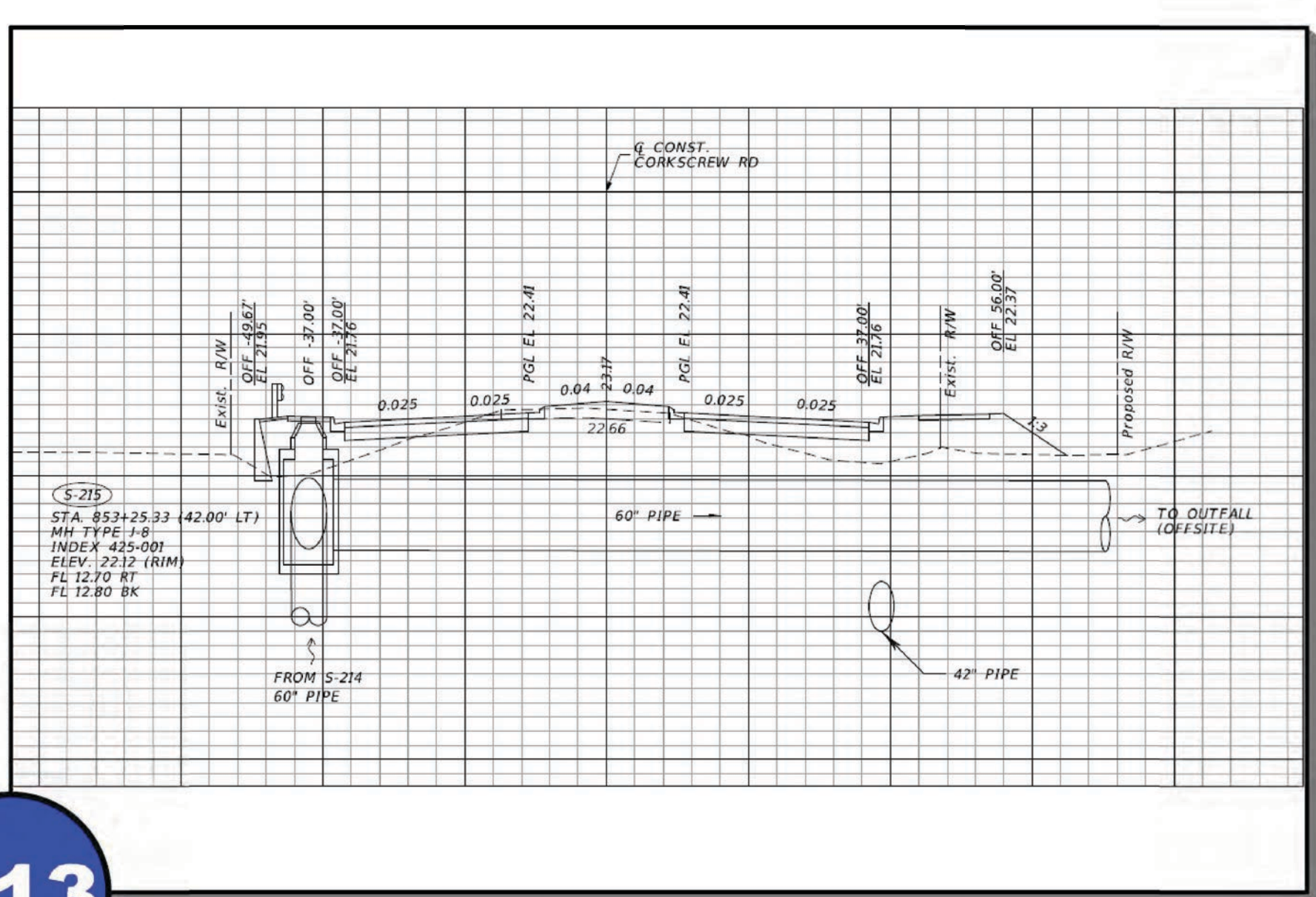
As part of the current Corkscrew Phase 2 widening improvements (to four lanes from Bella Terra to just past Alico Road) additional cross drains are being added near the Alico Road intersection. These additional cross drains will help convey the additional runoff routed to the south from the Alico North-South Conveyance Capacity improvements.



D12

Corkscrew Ph1 Slough Conveyance Improvements

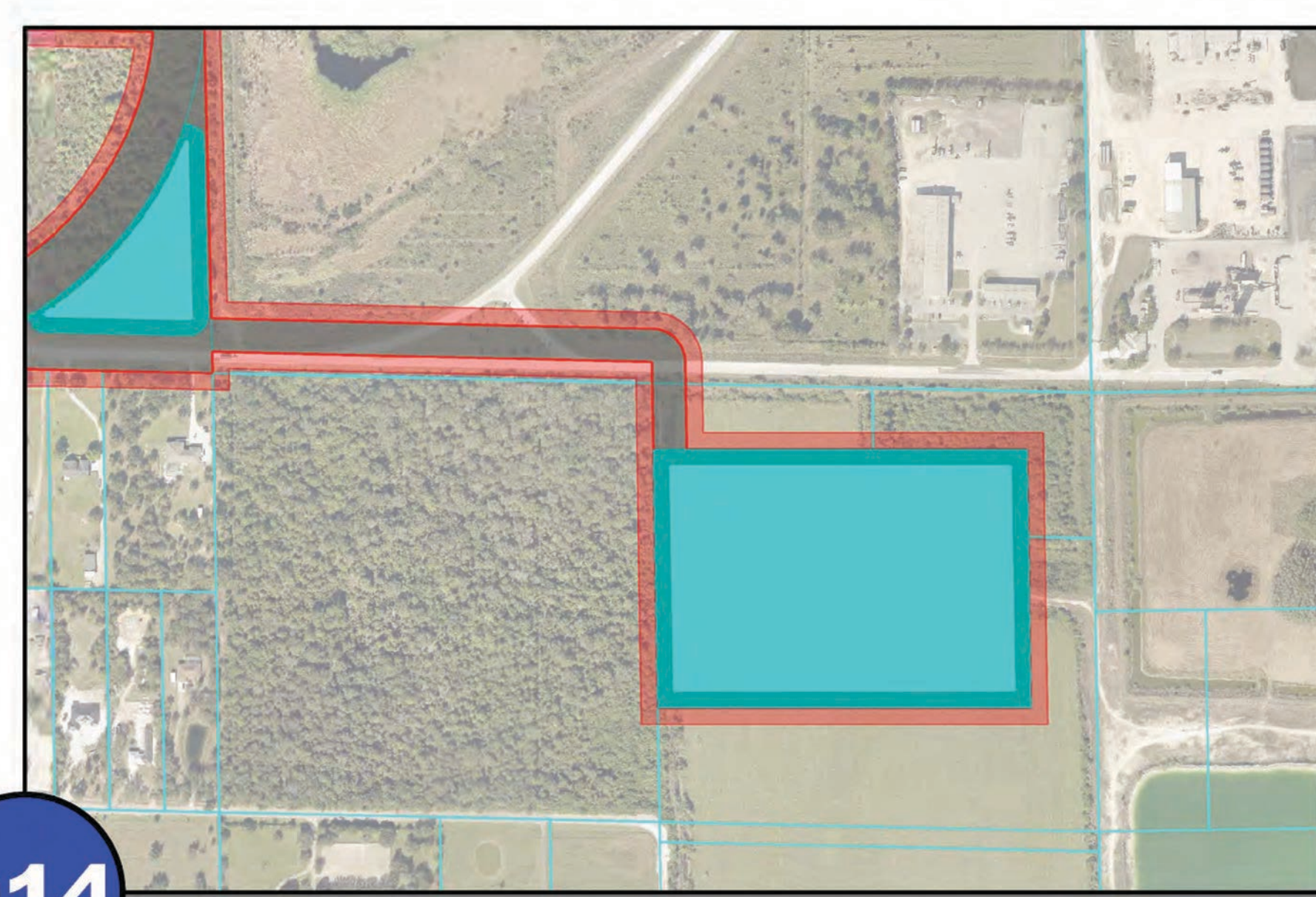
As part of the Corkscrew Phase 1 improvements recently constructed two large (12' x 6') box culverts were constructed to improve north to south drainage conveyance capacity. This is the same slough system that crosses Alico further north and passes through Wildblue.



D13

Corkscrew Ph2 Conveyance Improvements

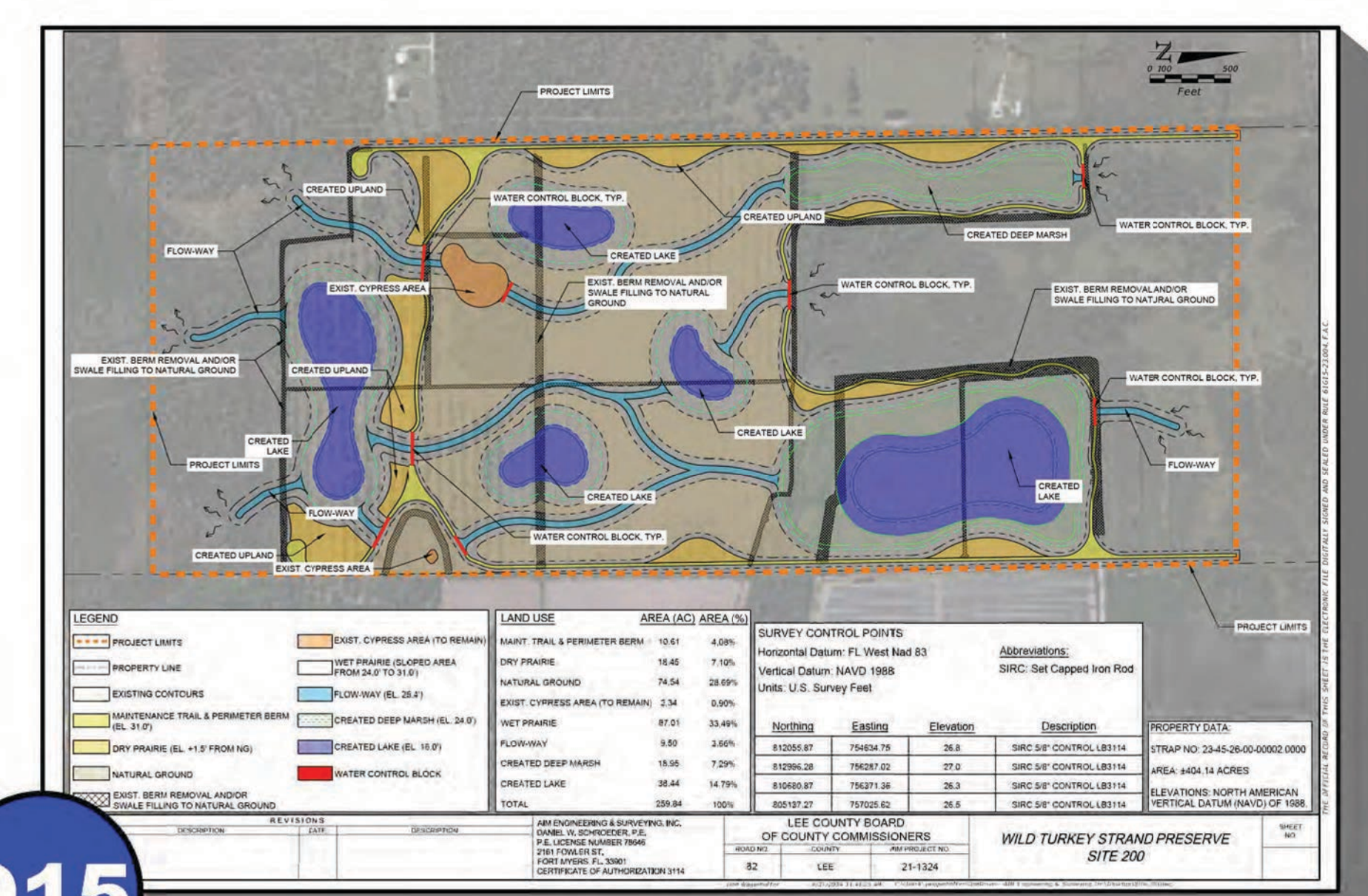
As part of the current Corkscrew Phase 2 Improvements a large drainage trunk line being installed on the north side of Corkscrew. This drainage pipe will collect offsite drainage from the north, between WildBlue and Alico Road and conveyance south, under Corkscrew Road, via a 60" pipe further increasing the north to south drainage capacity.



D14

Additional Storage Pond

Lee county has acquired an additional pond that will be constructed in Phase 1 and connected into the overall stormwater management system. This pond will provide additional storage capacity and stormwater attenuation.



D15

Wild Turkey Strand (WTS) Site 200

As part of this project Lee County will be providing environmental restoration of old farm areas, removing old berms and ditches. These improvements will restore natural drainage patterns while also providing additional stormwater storage potential.